



## Samson<sup>®</sup> Material Feeder



## CONTENT

3	Surface Installation
4	An Economical Solution
5	Construction Concept
6	Operational Concept
7	Discharge Rate Control
8	Body and Entry Designs
9	Samson® Design
10	Dust and Fume Control
11	Enclosure Systems
12	Discharge Interface
13	Feeder Options
14	Alternative Fuels
15	Drive Systems
16	Instrumentation
17	Electrical Controls
18	Sizing and Screening
19	Live Storage Solutions
20	Side Loading and Drive over Tipping
21	Samson® Material Feeder - Under Rail or Road
22	Related Products
23	After Sales & Field Services

## A Unique Concept

SAMSON Materials Handling Ltd. developed the Material Feeder type Samson® MF concept to satisfy the demands of clients requiring a mobile solution to receive general bulk materials such as coal and aggregates direct from tipping trucks in mainly Ship Loading applications and, where fixed plant was not a viable option.

The Samson® MF concept eliminated the need for any truck ramps, or fixed civil work and was rapidly extended to fixed plant projects where the flexibility of surface installation is a clear benefit. This is particularly realised in port applications where the high ground water level makes conventional underground pits expensive to construct and maintain.



Samson® MF integrated to a Mobile Shiploader receives copper and gold concentrate



Mobile Samson® MF receives as-mined limestone from articulated trucks



Samson® MF clinker intake for cement grinding plant with integrated dust extraction





Twin Samson® Material Feeders receive minus 25 mm limestone for the Flue Gas De-Sulphurisation system in an US American power plant

## Surface Installation



Samson® MF raised discharge permits transfer direct to surface mounted belt conveyor



The Samson® MF provides a compact solution in this intake facility for crushed limestone. Being delivered by trucks to the power plant working on a merry-go-round basis from a local quarry only 10 miles distant. A fast track flexible solution requiring the minimum of ground works.

- No deep pits
- No underground hoppers
- No expensive civil works
- Flexibility of location
- One piece integrated machine
- Receives direct from trucks
- Receives direct from shovels
- Buffer holding capacity
- Fast truck discharge
- Controlled rate feeding
- Handles dry and dusty materials
- Reduced dust generation
- Handles wet and sticky materials
- No risk of bridging or blockage
- Reduced energy consumption
- Easy maintenance access
- Easy housekeeping access
- Reliable in service
- Proven references worldwide

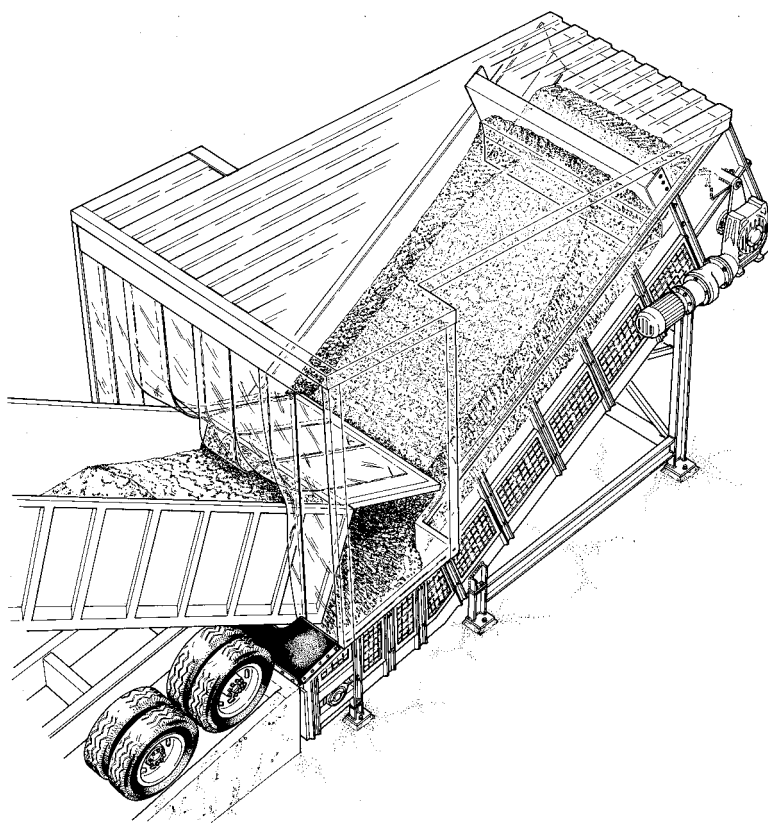
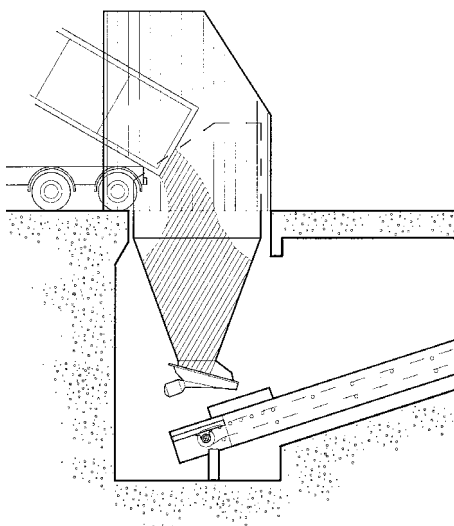


In this cement grinding plant located in the London Docklands two Samson® Material Feeders intake cement clinker plus gypsum

## An Economical Solution

As illustrated, a conventional underground truck tipping hopper with deep pit and feeder discharging to an inclined belt conveyor to raise the material out of the pit and onto the associated process plant.

It requires permanent and expensive civil works and cannot be relocated to accommodate plant development.

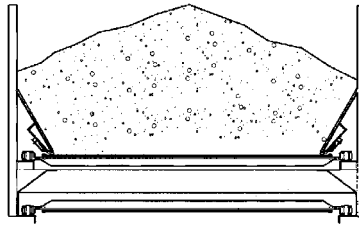


The Samson® bulk material receiving unit truck dump station

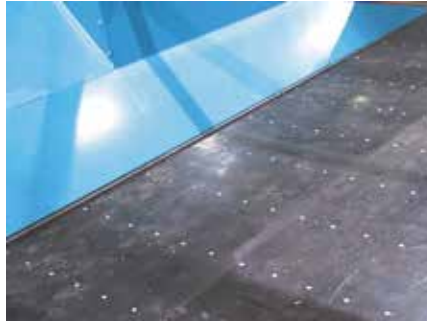




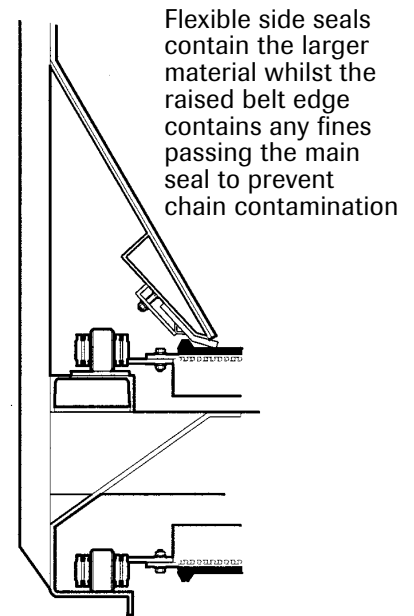
The wide apron-belt design permits a very low loading height which allows the trucks to discharge direct to the entry section with only a small access ramp.



Wide belt design eliminates bridging



The wide apron-belt design combines the strength of a steel Apron Feeder with the cleanliness of a belt feeder. Since the material depth is less than the belt width, the bridging and blockages associated with conventional tapered hoppers is completely eliminated guaranteeing reliable discharge.

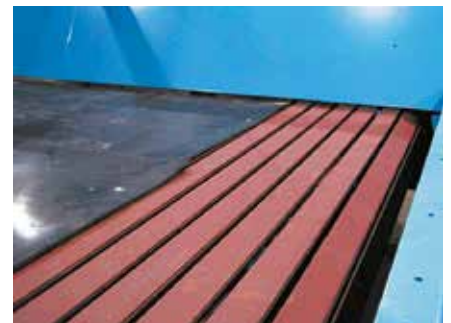


Flexible side seals contain the larger material whilst the raised belt edge contains any fines passing the main seal to prevent chain contamination

Highly developed over many years the Samson® MF side seal contains the material within the body preventing spillage.



External chains outside the material flow

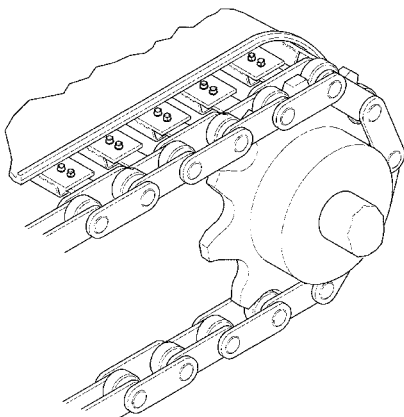


Steel apron bars support the load



Load carried on the chain rollers

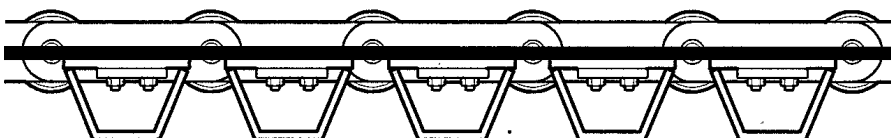
## Construction Concept



Trapezoidal shaped apron bars at every chain pitch provide maximum support and allow minimum sprocket diameter.



Flexible side seal with outer belt ledge



Conveyor belt aligned with the chain pin centre and rivetted to the steel apron bars



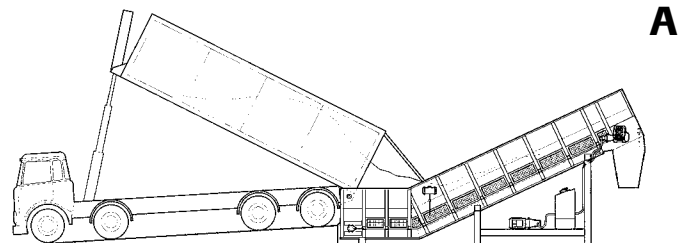
Broken glass is received by the Samson® MF at a recycling operation

## Operational Concept

Material is drawn from the tipping truck into the Samson® MF body by the forward moving apron-belt conveyor. The operating concept can be divided into three stages as illustrated.

### Stage A

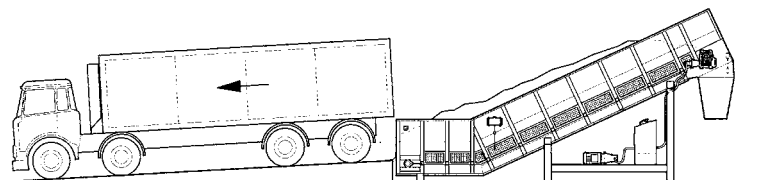
The first truck arrives and discharges its material on to the forward moving Samson® MF apron-belt. The belt moves forward, so the material is drawn from the truck body.



Material is drawn into the empty Samson® MF body by the forward moving apron-belt

### Stage B

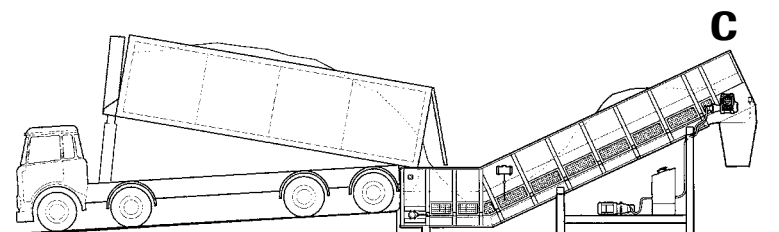
When the truck is empty it departs the Samson® MF and the material contained within the unit is continually discharged to the following conveyor system. The material moves forward and the entry section is exposed.



The complete truck contents transferred to the Samson® MF body

### Stage C

After the first truck has departed, the following truck reverses into position. During this time period the forward moving apron-belt has exposed the entry section ready to accept the next truck contents. And so it goes on...



During the truck manoeuvring cycle the Samson® MF entry empties ready to accept the next load





Material stored within the Samson® MF body may be at various load levels along the length of the unit

## Discharge Rate Control



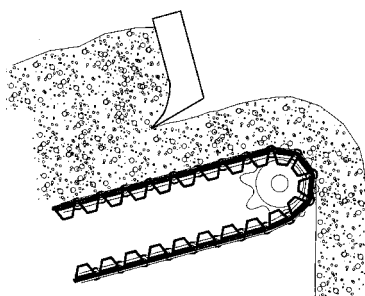
Levelling blade controls the material bed depth at the discharge

As material is transferred from the truck or shovel to the Samson® MF the load level varies from zero to 100 % along the machine length.

Since the output rate is proportional to the material bed depth and belt speed, it is necessary to regulate the bed depth such that the output rate may be controlled by varying only the belt speed.

The levelling blade solution maintains a constant bed depth at the discharge by cutting the peaks into the troughs and so enables the final output rate to be closely regulated.

For extremely cohesive materials the rotating teaser shown right performs the same task by cutting the flow into manageable pieces.



Rotating teaser provides a closely controlled discharge rate handling wet clay





The Samson® MF with deflected chassis and parallel entry (width 3.0 m) receives broken glass from both tipping trucks and shovels

## Body and Entry Designs

The Samson® MF deflected chassis design provides a near horizontal loading section to receive material from tipping trucks. This maximises the entry volume and eliminate any risk of the truck tailgate fouling the apron-belt.

For use only with shovels the straight chassis design is adequate to maintain the holding volume.

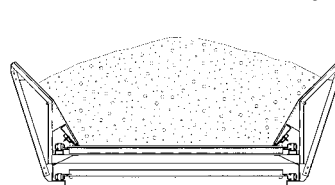
For operation with trucks the access ramp height directly controls the entry volume and therefore the time required to discharge the truck.

Illustration A shows a standard ramp giving a reasonable entry capacity of say 10 tons. Illustration B shows a raised ramp height giving an increased entry volume to reduce the truck tipping time and increase the overall average handling rate.

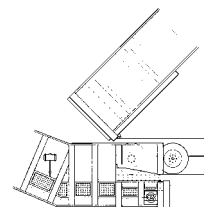
For operation with multiple truck designs, the Universal Truck Entry provides total flexibility.



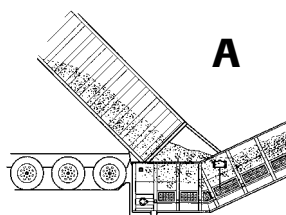
The Samson® MF with Straight Chassis and flared entry (width 4.5 m) receives sandy clay from shovels



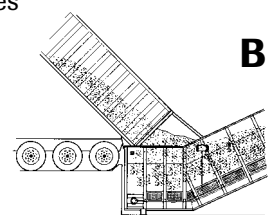
Flare entry width from 4.0 to 6.0 m



Universal truck entry for all truck types



Standard ramp



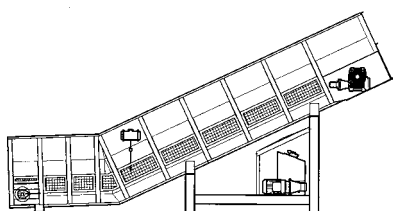
Raised ramp for greater entry volume



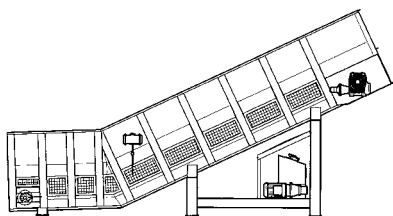


The massive Samson® MF1600 receives gabbros rock from shovels for barge loading at 1,000 t.p.h.

## Samson® Design

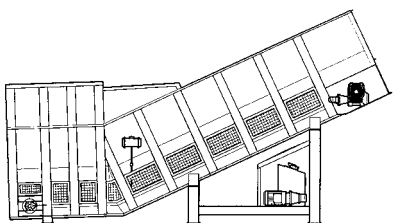


Samson® MF380

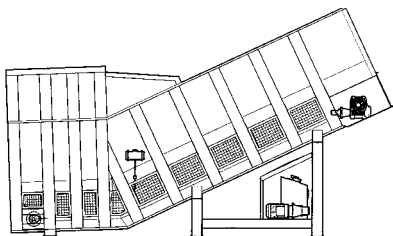


Samson® MF450

The Samson® MF construction expands in strength as the chain specification increases



Samson® MF800



Samson® MF1600

The Samson® MF is available in five basic design ranges each signified by the chain tension rating known as.

**Samson® MF380** for light materials and low duty applications.

**Samson® MF450** with its short pitch chain design ideal for medium duty mobile applications where the lowest entry height is required.

**Samson® MF800** for continuous duty applications handling heavier mineral ores and where continuous availability is mandatory.

**Samson® MF1600** for extreme duty applications including ROM material sizes and for the most arduous operating conditions.



The Samson® MF with deflected chassis and full enclosure including dust filter receives cement clinker

## Dust and Fume Control

The Samson® MF is the ideal solution for the intake of dry and dusty materials where dust pollution is a real hazard.

Material free fall is nearly zero and the bulk of the truck contents is drawn into the body in a controlled stream which eliminates particulate separation and therefore virtually eradicating dust pollution at source.

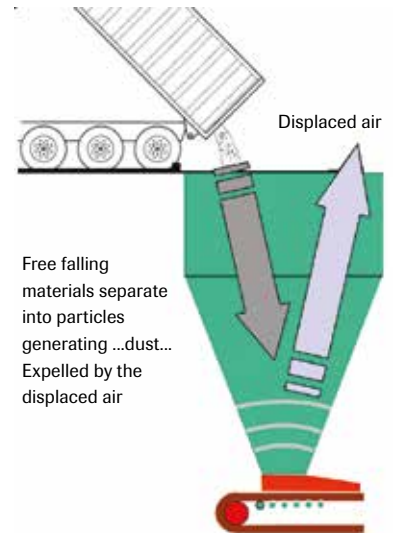
Only when handling the dusties materials (cement clinker for example) is it necessary to provide dust extraction and then only a relatively small air volume is required. Typically only 25% of the rate required for extraction on conventional deep hoppers thus saving not only on capital cost but also on long term operational costs.



Flow into the Samson® MF in a controlled stream

With a conventional underground hopper the material falls freely allowing particulate separation and generating high velocity displaced air.

The displaced air ejects the dust particles from the hopper at high speed causing extreme fugitive dust pollution with both environmental and health and safety implications.



Conventional underground hopper



Resultant dust pollution





The Samson® MF enclosure integrated to a complete coal preparation plant handling ROM material direct from the adjacent open cast mine

## Enclosures Systems



Enclosure with fume extraction for odious materials



Flexible PVC sheet partial enclosure



Enclosure with extended flared entry for large mining dump trucks



Full enclosure with flexible entry curtain but without dust extraction



Full enclosure with ducted dust extraction

Fixed enclosures clad in profiled steel sheeting over a fabricated steel frame made integral to the body of the Samson® MF eliminating the need for additional or separate buildings... less cost... greater flexibility...

The enclosure may be supplied complete as flat-packed components for site assembly or may be manufactured locally with an engineering only package by SAMSON Materials Handling.





Samson® MF with teaser discharges to an inclined belt conveyor



Synthetic gypsum intake to Board Plant



Synthetic gypsum discharged to horizontal belt conveyor

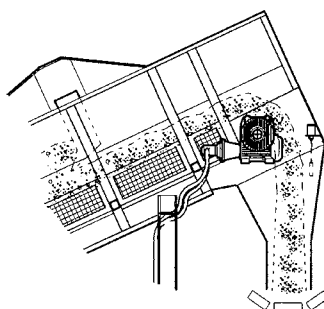
## Discharge Interface

The parallel head chute eliminates risk of bridging and blockage when handling cohesive materials and it is always the preferred solution where the plant arrangement permits.

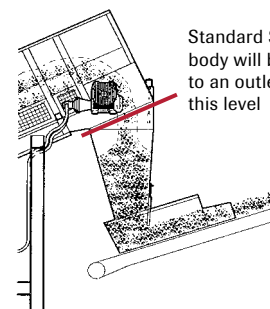
Where the ongoing conveyor is in-line or at an angle to the Samson® MF, the centralising chute is the only option but usually this solution is less compact and requires an increased discharge height.



The Samson® MF with a centralising head chute discharges to a conveyor positioned in-line



Parallel head chute for 90 degree transfer



Centralising head chute

Standard Samson® MF body will be terminated to an outlet flange at this level





Vibro-Feeder controlling feed rate to a steep angle belt conveyor



Kleen-Line belt feeder transfer to Bucket Elevator



Single screw feeder provides metered output to a Bucket Elevator

## Feeder Options



Twin screws meter output to progressive cavity pump

For closely controlled discharge rate down to a few cubic metres per hour a suitable feeder device at the Samson® MF discharge is required.

Using the head chute as a small buffer hopper the output of the Samson® MF is regulated using high a level detector to stop/start the drive and maintain a constant level in the head chute.

Generally not used with a levelling blade except in special conditions.

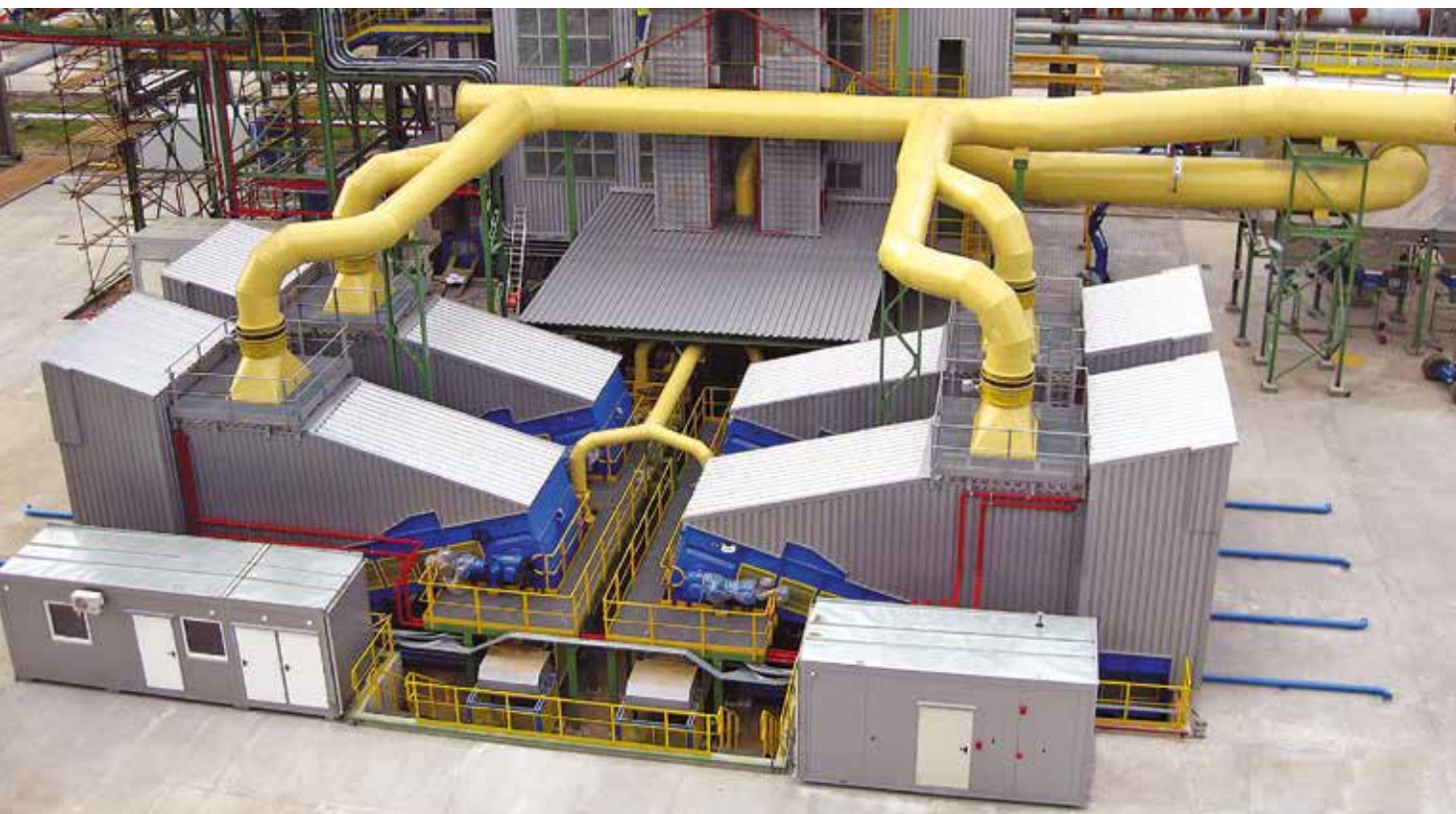


Vibro-Feeder with reject grill to remove over size material



Vibratory Feeder provides regulated output to an inclined belt conveyor





Four Samson® Material Feeders provide an alternative fuel intake facility to a major Power Plant

## Alternative Fuels

To satisfy sustainability obligations major energy users such as Power Utilities and Cement Plants utilise renewable resources such as wood chip and other wastes, by-products and co-products to offset their carbon footprint.

The Samson® MF is the ideal intake facility for such operations being able to handle most dry bulk solids with the added bonus of simplified installation, reduced project and operating costs and offering flexibility in location or possible relocation.



Wood chip intake for a Brewery Steam Boiler



Intake from high capacity live floor trailers



The wide apron-belt Samson® MF concept is ideal for difficult materials





Samson® MF1600 with tandem drives using two helical/bevel speed reducers mounted one each side of the extended head shaft

## Drive Systems



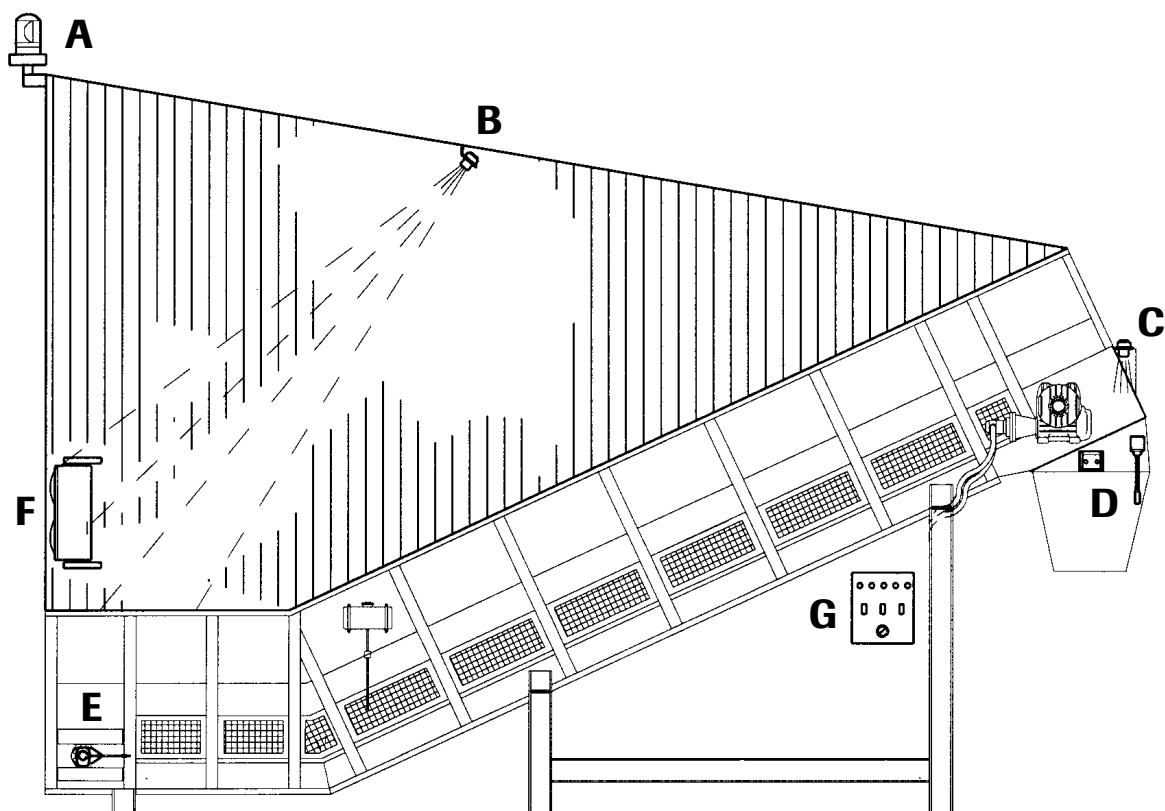
High efficiency helical/bevel main reduction gear with helical primary



Direct coupled hydraulic motor drive with local or remote hydraulic power unit allowing the electric motor and control equipment to be positioned clear of the feeder in a more accessible location.

Stand alone Samson® Material Feeders are generally supplied with

direct coupled electric motor drives with helical/bevel speed reducer mounted direct to the extended head shaft. For special applications tandem gears may be supplied (as shown above) and also hydraulic drives are available. ATEX certification supplied where required.



## Instrumentation

For the safe operation and protection of the Samson® MF various items of field instrumentation are available:

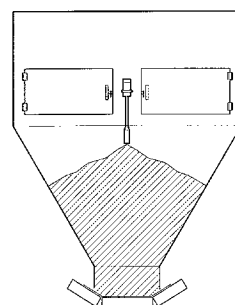
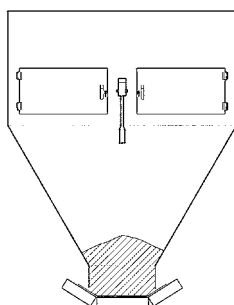
- A** Rotating warning beacon linked to a drive torque monitoring system to warn of impending overload and indicate to the operator to cease filling.
- B** Ultrasonic detector to signal the presence of a vehicle at the entry and initiate a controlled startup sequence for the Samson® MF and the ongoing plant.
- C** When the head chute forms a buffer hopper for an ongoing feeder this level detector is linked to the drive control to start the Samson® MF on low level and stop on high level, see right diagram below.
- D** Blocked chute detector arranged to stop the drive if the head chute is over filled or blocked with material.
- E** Tail shaft rotation sensor to inhibit the drive system in the event rotation is lost in normal operation.
- F** Traffic lamp linked to the on-going process control to signal either the machine readiness or the grade or type of material required.
- G** Local control cabinet plus safety stop system.

Instruments are generally supplied loose but with mounting brackets to fix to the Samson® MF or chutes.

Chute level detection for use with an auxiliary feeder or when the ongoing conveyor acts as an extractor to control the feed rate.



Twin Samson® Material Feeders with traffic management

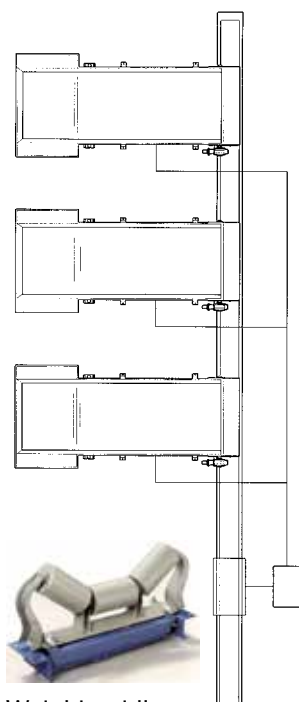


Samson® MF starts on low level stops on high level





Local cabinet with motor control gear



Weighing idler



Inverter speed control modules located local to the Samson® MF but linked to a remote control room

## Controls

### Variable Output Rate

To control the output rate of the Samson® MF using the levelling blade system it is necessary to provide variable speed for the belt drive.

For mechanical drives an inverter is required to control the motor speed and therefore the belt speed. For a fixed levelling blade height the volumetric output rate is proportional to the belt speed.

For output rate control by mass the speed control may be linked to a belt weigher on the following conveyor.

### Interfaces

Invariably the Samson® MF will be linked to a plant control system for sequencing with other equipment.

The Samson® MF may be supplied with a local PLC plus necessary communication protocol compatible with the main plant control systems.

### Blending Systems

When several different materials must be blended onto a common collecting conveyor multiple Samson® Material Feeders, one for each material type, may be linked to a central controller and arranged to discharge a set blend ratio as a proportion of the total output as measured by a downstream belt weigh idler.

Control units are supplied loose for site installation either complete with all necessary motor control and logic gear or as a local control station only linked to an existing central motor control centre (MCC) perhaps located some distance from the equipment.





Samson® MF plus Twin Shaft Rotary Sizer receives as-mined limestone from dump trucks and provides a manageable lump size for onward conveying

## Sizing and Screening

The Samson® MF may be supplied complete with integral rotary crusher or screening equipment to size the raw material before onward conveying, either as a package or engineered to suit, free issue equipment.



Samson® MF supplied with vibrating screen to remove oversize material before onward conveying



As-mined limestone minus 800 mm





The Samson® MF800 series provides 100 cubic metres of live storage for alternative fuels in a Cement Plant

## Live Storage Solutions

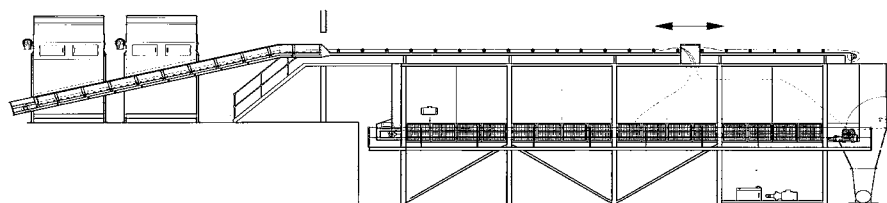


Extended inclined section for increased storage or discharge height



For handling difficult materials that are liable to bridge and block in conventional silos the Samson® MF offers the ideal solution for live storage with holding capacities up to around 200 tons.

Illustrated is the conventional Samson® MF design with horizontal loading section and inclined discharge. With this arrangement the storage volume is generally limited by the increased chain tension required to raise the load.



The Samson® MF horizontal storage bunker with overhead conveyor and plough discharger



Specialised application for the storage of sewage sludge including twin Samson® Material Feeders each with belt conveyor transfer to two horizontal storage units within the building, both to store and discharge on demand.





The side loading Samson® MF receives cement clinker for import directly to an existing conveyor installation

## Side Loading and Drive over Tipping

In confined spaces the side loading solution may provide an economical alternative allowing a simplified plant layout with reduced transfer points and minimum disruption to the process operation during the new equipment installation.

Side loading is particularly suited to drive-over-tip applications where the Samson® MF may be mounted below floor level or supplied with a suitable ramp, thus allowing the trucks to drive over the entry section, tip and continue in the same direction, as illustrated below, the Samson® MF is below the floor level.



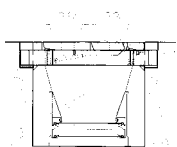
Truck passes over the closed doors



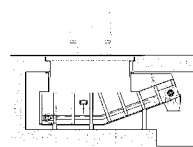
Special truck for wet and sticky nickel tailings



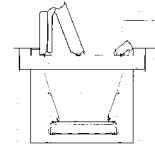
Truck discharges through open doors



Steep Samson® MF sides  
Plates emilinate bridging



Samson® MF beneath  
opening doors above



Stop raises and doors  
open automatically

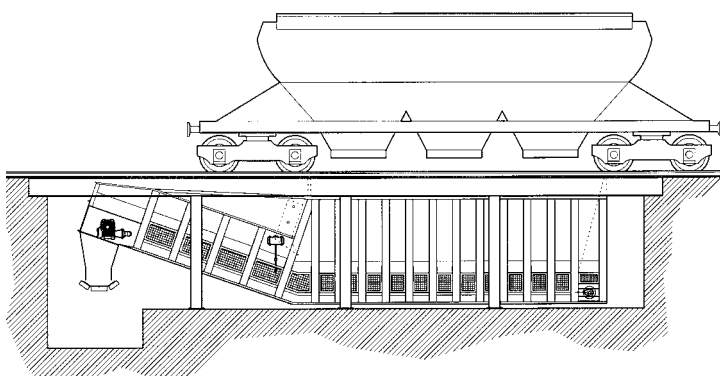
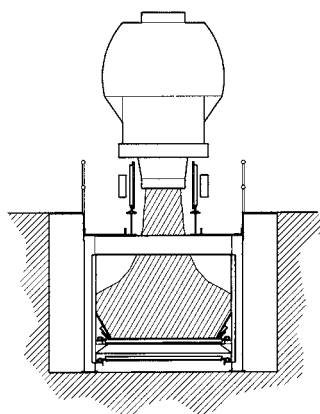


Twin Samson® Side Tip Feeders with vertical  
elevators to dome storage



Discharge facility for hopper bottom railcars receives coal for a Cement Plant including a Samson® MF with 80 tons holding capacity

## Samson® Material Feeder - Under Rail or Road



The wide apron-belt Samson® MF concept permits a shallow excavation and economical installation

The Samson® MF solution for railcar discharge may be implemented in a shallow pit, typically with depth only 4.0 metres, ideally suited in port area with high ground water level or where working on hard rock increases the cost of the excavation. A conventional tapered hopper could require as much as 14 metres of excavation to obtain the necessary hopper angle for reliable material flow handling such as industrial coals etc.

With a shallow pit, the material free fall is minimised and, since the apron-belt of the Samson® MF is wider than the typical railcar, the material flows outward reducing the velocity of the displaced air and thereby reducing dust generation.

With the deflected chassis design the raised discharge provides an ideal transfer to the following conveyor which, thanks to the shallow pit depth, may be of reduced length and therefore reduced energy input saving on capital and running costs.





Twin Samson® Material Feeders with full dust control integrated to this Mobile Shiploader permits direct bulk export from truck to ship

## Mobile Shiploader and Stacker with Integral Samson® Material Feeders



STORMAJOR® SM with integrated Samson® MF1600 Series and radial stacking boom for barge loading



STORMAJOR® SM combines the benefits of a Samson® MF with a radial stacking boom mounted to a common mobile chassis

## After Sales & Field Services

### Customer Proximity around the World

At AUMUND, service does not end at the sale of the equipment. It's the beginning of a long-term partnership. AUMUND offers you a full range of services – from commissioning to the delivery of quality spare and wear parts to customized preventive maintenance programs and equipment upgrading. The benefits for you: Maximum equipment efficiency at lower operating cost.

### Spare and Wear Parts

A comprehensive range of genuine spare parts is available for our entire product range from stocks in Germany, Hong Kong, Brazil, the USA and Saudi Arabia. Our product specialists provide assistance and respond instantly.

### Preventive Maintenance

Knowing beforehand that service will be needed allows you to schedule downtime and save money with timely repairs. Repairs or retrofits can be accurately anticipated allowing for the downtime to be at the most convenient times and at the lowest possible cost.

### Retrofits & Modernisation

Aged and worn equipment? Capacity increase needed? Too high operating cost? AUMUND "just as new" retrofits are economical and tailor-made solutions for improving your existing equipment at reasonable cost.

### Commissioning and Field Service

Today, presence "on the spot" is an absolute "must". Therefore, our commissioning and service engineers operate from support centers on all continents to guarantee immediate and competent support.



## AUMUND Group Spanning the Globe

The AUMUND Group offers efficient solutions for conveying and storage of bulk materials. A particular strength is the technologically mature and extremely reliable machinery for handling all kinds of bulk materials, even hot, abrasive or sticky. Nearly 24,000 installations worldwide substantiate the excellent reputation and good market position of the Group. The companies of the AUMUND Group are active in about 150 countries with 20 locations all over the world and a global network of almost 100 representatives.

**AUMUND** Holding B.V. / The Netherlands

**AUMUND** Fördererbau GmbH / Germany

**AUMUND** Fördertechnik GmbH / Germany  
Branch Office Dubai / U.A.E  
Branch Office Wroclaw / Poland

**AUMUND** S.A.R.L. / France

**AUMUND** Corporation / USA

**AUMUND** Ltda / Brazil

**AUMUND** Machinery Technology (Beijing) Co. Ltd / China

**AUMUND** Asia (H.K.) Ltd / Hong Kong / China  
Branch Office Jakarta / Indonesia

**AUMUND** Engineering Private Ltd / India

**SCHADE** Lagertechnik GmbH / Germany

**SAMSON** Materials Handling Ltd / GB  
Branch Office Bristol / GB

**AUMUND** Group Field Service GmbH / Germany

**TILEMANN** GmbH / Germany

**AUMUND** Logistic GmbH / Germany

The AUMUND Group operates Service Centres and Warehouses for spare parts in Germany, the USA, Brazil, Hong Kong, Saudi Arabia, and in Great Britain. Almost 60 dedicated Supervisors tend to clients' needs across the globe and a specialized PREMAS® Team provides Preventative Maintenance and Service support including inspection and consulting.





AUMUND headquarters in Rheinberg, Germany



**AUMUND Foerdertechnik GmbH**  
[www.aumund.com](http://www.aumund.com)

